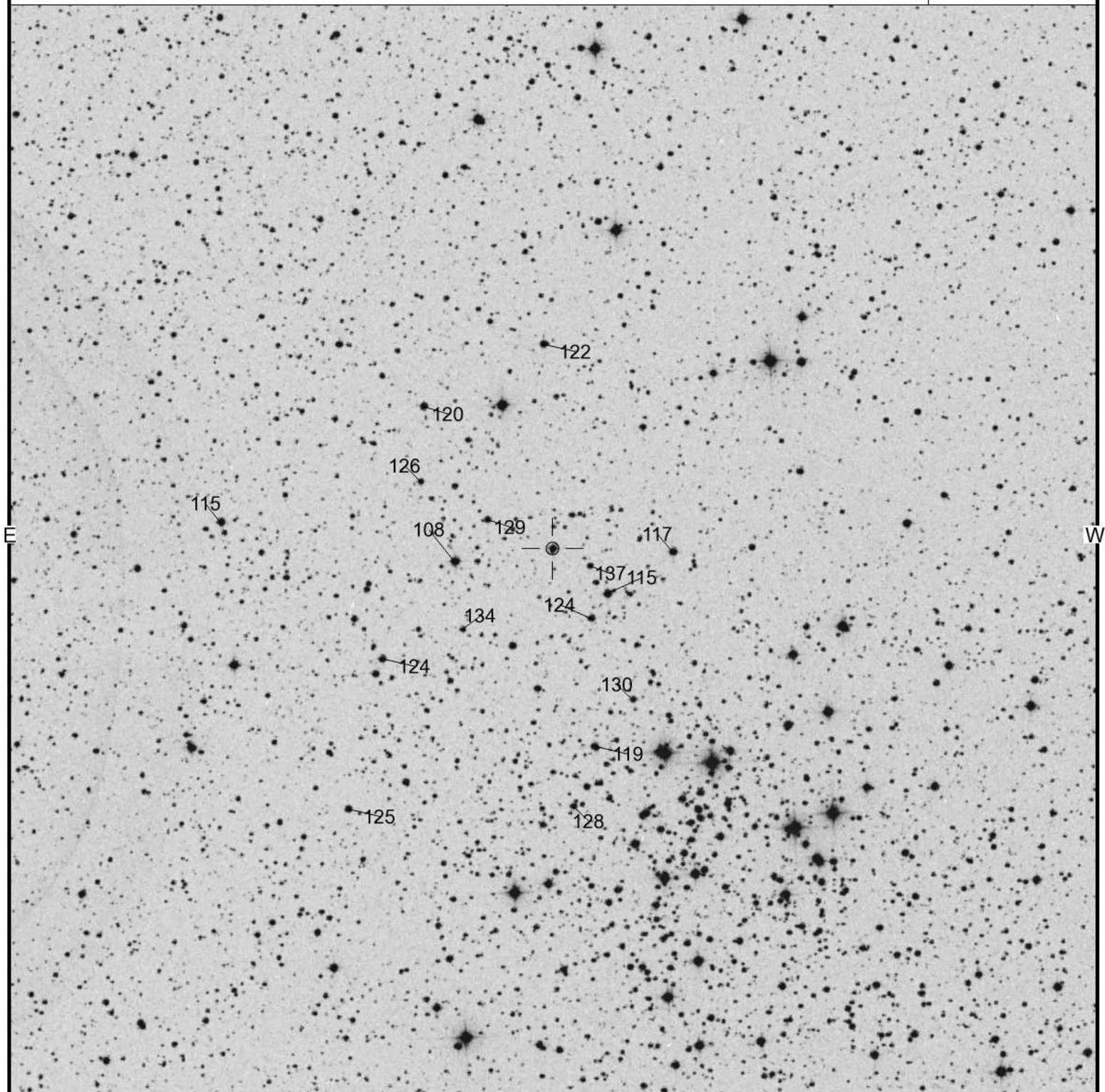


V0831 Cas

Magn: 11.3 - 11.5 V
Period:
Type: HMXB/XP
Spec: B1Ve

RX J0146.9+6121
(2000) 01:47:0.22 +61:21:23.7

AAVSO
Chart
5799apl



FOV = 30.0'

Please use the photometry table for CCD observations.

Field Photometry for RX J0146.9+6121 From the AAVSO Variable Star Database

Data includes all comparison stars within 0.25000° of RA: 1:47:00.22 (26.75092) & Decl.: 61:21:23.70 (61.35658).

AUID	RA.	Dec.	Label	U	B	V	Rc	Ic	J	H	K	Comments
000-BJS-918	1:47:22.75 [26.84479d]	61:21:02.6 [61.35072d]	108	-	11.374 (0.035) ¹⁸	10.849 (0.025) ¹⁸	10.517 (0.038) ¹⁸	10.121 (0.035) ¹⁸	-	-	-	Sarty "p" star COMP for diff. and ens. phot.
000-BKD-685	1:46:47.70 [26.69875d]	61:20:09 [61.33583d]	115	-	12.264 (0.015) ¹⁸	11.507 (0.014) ¹⁸	11.038 (0.019) ¹⁸	10.507 (0.022) ¹⁸	-	-	-	Sarty star f
000-BJS-919	1:48:16.59 [27.06912d]	61:22:05.8 [61.36828d]	115	-	12.015 (0.015) ¹⁸	11.492 (0.008) ¹⁸	11.164 (0.019) ¹⁸	10.819 (0.023) ¹⁸	-	-	-	
000-BJS-920	1:46:32.62 [26.63592d]	61:21:18 [61.35500d]	117	-	12.460 (0.012) ¹⁸	11.680 (0.010) ¹⁸	11.207 (0.016) ¹⁸	10.638 (0.012) ¹⁸	-	-	-	Sarty "b" star Ens. Phot. comp
000-BKD-686	1:46:50.65 [26.71104d]	61:15:56.3 [61.26564d]	119	-	12.426 (0.013) ¹⁸	11.869 (0.010) ¹⁸	11.544 (0.013) ¹⁸	11.141 (0.019) ¹⁸	-	-	-	Sarty star g
000-BJS-921	1:47:30.05 [26.87521d]	61:25:18.4 [61.42178d]	120	-	12.621 (0.020) ¹⁸	12.035 (0.018) ¹⁸	11.683 (0.024) ¹⁸	11.328 (0.020) ¹⁸	-	-	-	Sarty "q" star Ens. phot. comp
000-BKD-689	1:47:02.53 [26.76054d]	61:27:01.5 [61.45042d]	122	-	12.867 (0.017) ¹⁸	12.245 (0.017) ¹⁸	11.869 (0.025) ¹⁸	11.507 (0.028) ¹⁸	-	-	-	Sarty star k
000-BKD-687	1:46:51.36 [26.71400d]	61:19:27.7 [61.32436d]	124	-	13.031 (0.015) ¹⁸	12.353 (0.014) ¹⁸	11.957 (0.022) ¹⁸	11.551 (0.026) ¹⁸	-	-	-	Sarty star h
000-BJS-922	1:47:39.38 [26.91408d]	61:18:20.7 [61.30575d]	124	-	13.074 (0.018) ¹⁸	12.390 (0.016) ¹⁸	11.881 (0.021) ¹⁸	11.341 (0.022) ¹⁸	-	-	-	
000-BJS-923	1:47:47.06 [26.94608d]	61:14:12.5 [61.23680d]	125	-	13.170 (0.016) ¹⁸	12.527 (0.009) ¹⁸	12.160 (0.014) ¹⁸	11.725 (0.017) ¹⁸	-	-	-	
000-BJS-924	1:47:30.64 [26.87767d]	61:23:14.1 [61.38725d]	126	-	13.226 (0.042) ³⁰	12.631 (0.017) ³⁰	12.268 (0.063) ³⁰	11.847 (0.089) ³⁰	-	-	-	
000-BKD-688	1:46:55.50 [26.73125d]	61:14:17.7 [61.23825d]	128	-	13.909 (0.025) ¹⁸	12.823 (0.021) ¹⁸	12.201 (0.033) ¹⁸	11.581 (0.036) ¹⁸	-	-	-	Sarty star i
000-BKD-690	1:47:15.24 [26.81350d]	61:22:11.7 [61.36992d]	129	-	13.497 (0.015) ¹⁸	12.892 (0.012) ¹⁸	12.532 (0.019) ¹⁸	12.101 (0.023) ¹⁸	-	-	-	Sarty star o
000-BJS-925	1:46:41.86 [26.67442d]	61:17:13.8 [61.28717d]	130	-	13.557 (0.018) ¹⁸	12.971 (0.016) ¹⁸	12.618 (0.024) ¹⁸	12.180 (0.018) ¹⁸	-	-	-	Sarty "e" star Ens. phot. comp
000-BJS-926	1:47:20.94 [26.83725d]	61:19:09.8 [61.31939d]	134	-	14.038 (0.019) ¹⁸	13.386 (0.016) ¹⁸	13.007 (0.032) ¹⁸	12.536 (0.039) ¹⁸	-	-	-	
000-BJS-927	1:46:51.74 [26.71558d]	61:20:54.9 [61.34858d]	137	-	14.511 (0.016) ¹⁸	13.738 (0.000) ¹⁸	13.255 (0.011) ¹⁸	12.747 (0.024) ¹⁸	-	-	-	

Report this sequence as: **5799apq** in the *chart* field of your observation report.

- **AUID** is the AAVSO Unique Identifier for the star. When reporting a problem, please include this AUID.
- Coordinates are in J2000 sexagesimal format, followed by decimal degrees
- [Click here for a search of variable stars in this field](#) via VSX

- **Label** is that star's label when plotted on an AAVSO chart, this is usually (but not always) its V magnitude rounded to the tenths.

Source Reference Table

Footnote	Source	Footnote	Source	Footnote	Source
1	Tycho-2	13	Draper, Draper Ext.	25	DENIS
2	GSC 1.2	14	NSV	26	CMC14
3	GSC 2.2.1	15	AAVSO Charts from <2006	27	RR Lyr Comp Star Database
4	USNO A2	16	TASS	28	Bright Star Monitor
5	USNO B1	17	ASAS3	29	APASS
6	GCVS	18	Sonoma Research Obs.	30	Wright 28cm
7	USNO Astrograph	19	Other	31	Wright 30cm
8	2MASS	20	GCPD	32	Mt. John 60cm
9	AAVSO Charts from ~2006-2008	21	SDSS	33	Sonoma 50cm
10	Henden USNO 1m	22	BSC	35	Landolt UBVRI 2007
11	CVCAT	23	B. Skiff's LONEOS	36	Landolt UBVRI 2009
12	Hipparcos	24	WBVR		