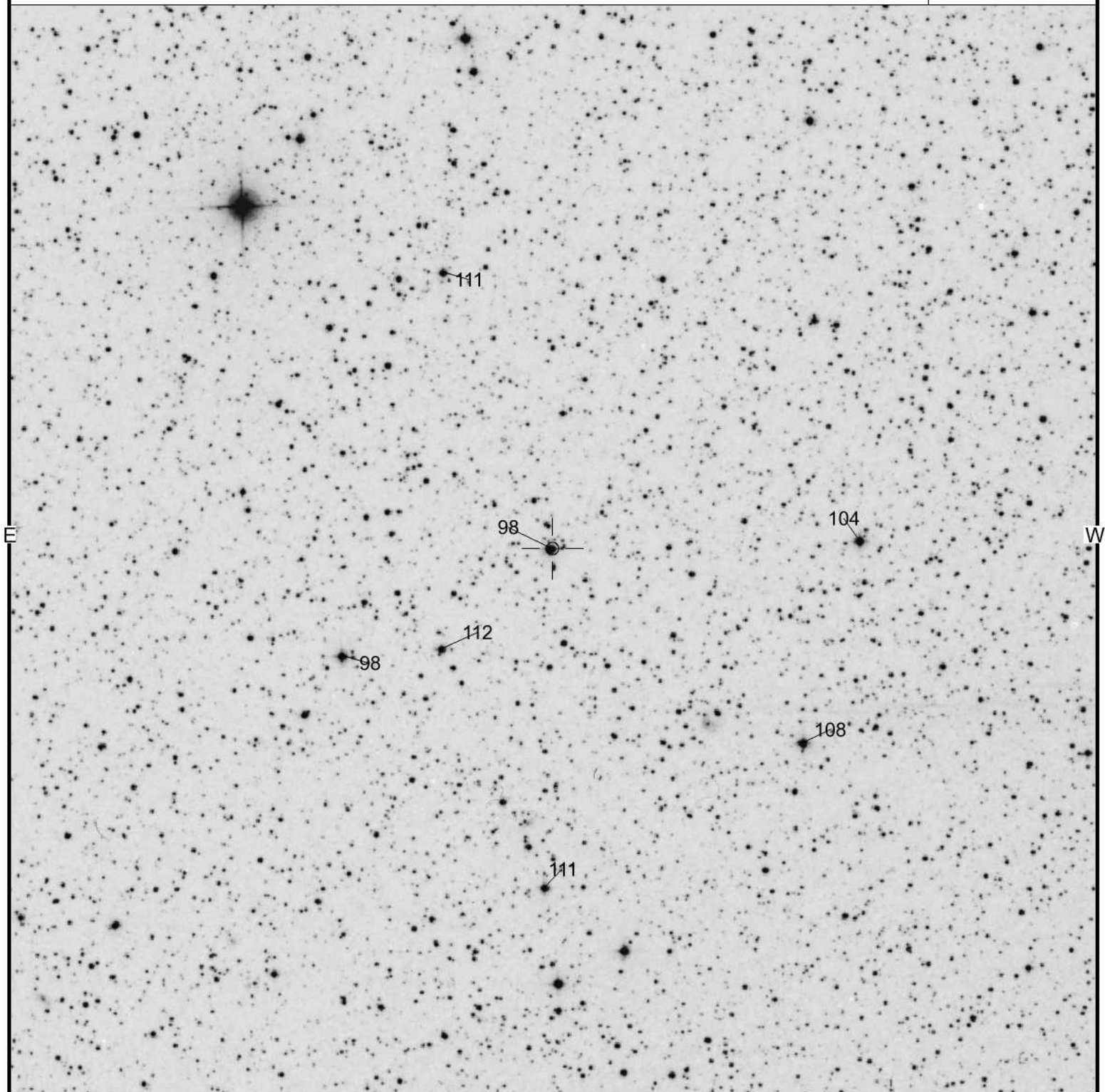


1H 0556+286

Magn: 0.0 - 0.0
Period:
Type:
Spec:

1H 0556+286
(2000) 05:55:54.70 +28:47:6.0

AAVSO
Chart
5799anw



FOV = 30.0'

Please use the photometry table for CCD observations.

Field Photometry for 1H 0556+286 From the AAVSO Variable Star Database

Data includes all comparison stars within 0.25000° of RA: 5:55:54.70 (88.97792) & Decl.: 28:47:06.00 (28.78500).

AUID	RA.	Dec.	Label	U	B	V	Rc	Ic	J	H	K	Comments
000-BKD-385	5:56:21.15 [89.08813d]	28:44:08.7 [28.73575d]	98	-	9.925 (0.014) ¹⁸	9.783 (0.011) ¹⁸	9.690 (0.012) ¹⁸	9.584 (0.016) ¹⁸	-	-	-	Sarty g. Diff and ens comp
000-BKD-386	5:55:54.95 [88.97896d]	28:47:06.4 [28.78511d]	98	-	9.918 (0.035) ¹⁸	9.779 (0.034) ¹⁸	9.622 (0.035) ¹⁸	9.481 (0.038) ¹⁸	-	-	-	Sarty c = obj
000-BKD-380	5:55:16.07 [88.81696d]	28:47:18.8 [28.78856d]	104	-	11.545 (0.010) ¹⁸	10.409 (0.006) ¹⁸	9.785 (0.012) ¹⁸	9.200 (0.021) ¹⁸	-	-	-	Sarty a
000-BKD-381	5:55:23.23 [88.84679d]	28:41:45.2 [28.69589d]	108	-	12.545 (0.010) ¹⁸	10.807 (0.000) ¹⁸	9.784 (0.011) ¹⁸	8.677 (0.026) ¹⁸	-	-	-	Sarty b
000-BKD-383	5:56:08.46 [89.03525d]	28:54:43 [28.91195d]	111	-	11.613 (0.007) ¹⁸	11.058 (0.006) ¹⁸	10.707 (0.012) ¹⁸	10.378 (0.021) ¹⁸	-	-	-	Sarty e. Ens comp
000-BKD-382	5:55:55.70 [88.98209d]	28:37:45.4 [28.62928d]	111	-	12.392 (0.042) ¹⁸	11.077 (0.029) ¹⁸	10.415 (0.050) ¹⁸	9.776 (0.053) ¹⁸	-	-	-	Sarty d
000-BKD-384	5:56:08.60 [89.03584d]	28:44:20.7 [28.73908d]	112	-	11.538 (0.013) ¹⁸	11.224 (0.012) ¹⁸	11.045 (0.013) ¹⁸	10.851 (0.016) ¹⁸	-	-	-	Sarty f. Ens comp

Report this sequence as: **5799aof** in the *chart* field of your observation report.

- **AUID** is the AAVSO Unique Identifier for the star. When reporting a problem, please include this AUID.
- Coordinates are in J2000 sexagesimal format, followed by decimal degrees
- [Click here for a search of variable stars in this field](#) via VSX
- **Label** is that star's label when plotted on an AAVSO chart, this is usually (but not always) its V magnitude rounded to the tenths.

Source Reference Table

Footnote	Source	Footnote	Source	Footnote	Source
1	Tycho-2	13	Draper, Draper Ext.	25	DENIS
2	GSC 1.2	14	NSV	26	CMC14
3	GSC 2.2.1	15	AAVSO Charts from <2006	27	RR Lyr Comp Star Database
4	USNO A2	16	TASS	28	Bright Star Monitor
5	USNO B1	17	ASAS3	29	APASS
6	GCVS	18	Sonoita Research Obs.	30	Wright 28 cm
7	USNO Astrograph	19	Other	31	Wright 30 cm
8	2MASS	20	GCPD	32	Mt. John 60 cm
9	AAVSO Charts from ~2006-2008	21	SDSS	33	Sonoita 50 cm
10	Henden USNO 1m	22	BSC	35	Landolt UBVR1 2007
11	CVCAT	23	B. Skiff's LONEOS	36	Landolt UBVR1 2009
12	Hipparcos	24	WBVR		