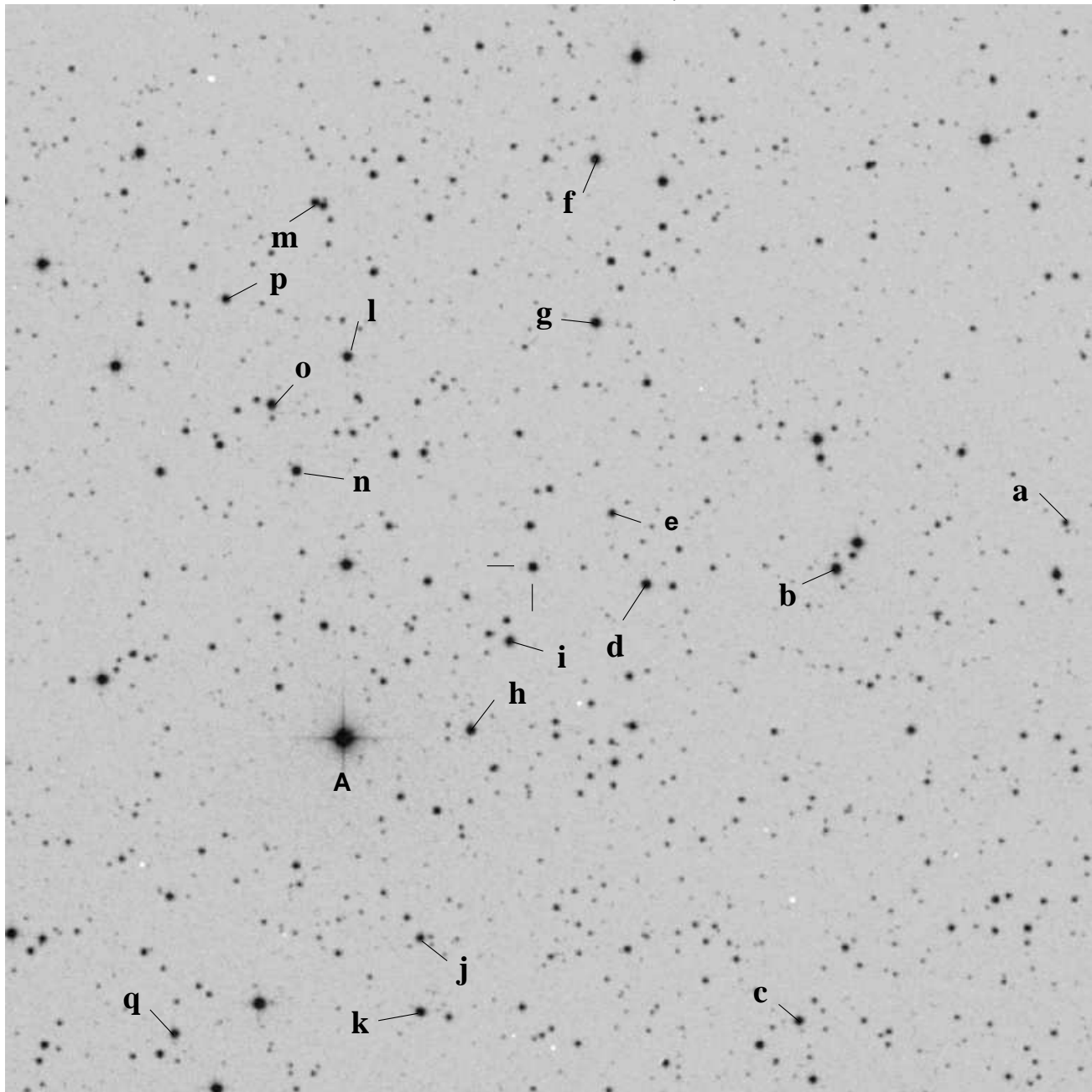


LPH058, AUID 000-BCZ-435 (AAVSO 0630+05B,  
SAX J0635+0533)



SAX J0635+0533:  $06^h35^m18^s.29 +05^\circ33'6''.3$  (J2000)  $V=12.83$ ,  $B-V=0.98$   
 15m ( $1/4^\circ$ ) sq field — North up. Near Rosette Nebula in Monoceros, Uranometria 182.  
 Position from: Kaaret P, Piraino S, Halpern J, Eracleous M. 1999, ApJ, 523,197  
 Comp and Check stars with relatively neutral B-V (from SRO data)

Star	RA	Dec	B	V	R	I	
a	06 34 49.291	05 32 59.269	13.887	13.379	13.053	12.719	Revision
b	06 35 01.505	05 33 04.176	12.775	12.531	12.379	12.196	[2009-09-07]
c	06 35 03.618	05 26 51.936	13.774	13.464	13.257	12.987	
g	06 35 14.765	05 36 27.756	13.250	12.915	12.704	12.437	
k	06 35 24.540	05 26 59.806	13.822	13.238	12.889	12.535	
o	06 35 32.717	05 35 20.764	13.354	13.066	12.879	12.657	

Notes on data reduction: For standard differential photometry use g as the comparison star. For ensemble photometry all of the above stars may be used. If inhomogeneous ensemble photometry is used, set the zeropoint with the comp star g.

Original Henden sequence data for SAX J0635+0533 from the 0.35m telescope at Sonoita Research Observatory (SRO) for stars with  $12.5 < V < 13.5$ ,  $98.701208 < RA < 98.951208$  and  $5.426750 < DEC < 5.676750$ :

ID	RA(J2000)	raerr	DEC(J2000)	decerr	nobs	V	B-V	U-B	V-R	R-I	V-I	Errors					
a	98.705381	0.027	5.549797	0.033	4	13.379	0.508	99.999	0.326	0.333	0.660	0.014	0.022	9.999	0.018	0.006	0.012
b=G	98.756272	0.028	5.551160	0.023	4	12.531	0.244	99.999	0.152	0.181	0.335	0.009	0.026	9.999	0.007	0.004	0.006
c	98.765076	0.031	5.447760	0.063	4	13.464	0.310	99.999	0.207	0.265	0.477	0.017	0.094	9.999	0.007	0.002	0.007
d	98.800056	0.022	5.547821	0.039	4	13.212	0.607	99.999	0.378	0.349	0.726	0.012	0.033	9.999	0.011	0.006	0.010
e	98.807840	0.054	5.564083	0.051	3	13.364	2.478	99.999	1.634	1.573	3.216	0.008	0.022	9.999	0.011	0.037	0.038
f	98.811501	0.017	5.644734	0.041	4	12.533	0.683	99.999	0.411	0.396	0.807	0.010	0.017	9.999	0.011	0.007	0.010
g	98.811521	0.018	5.607710	0.027	4	12.915	0.335	99.999	0.211	0.262	0.478	0.009	0.017	9.999	0.018	0.015	0.004
h=obj	98.826151	0.019	5.551763	0.016	4	12.703	0.966	99.999	0.698	0.739	1.445	0.014	0.022	9.999	0.011	0.012	0.022
i	98.831496	0.023	5.534890	0.022	3	12.688	1.181	99.999	0.689	0.691	1.389	0.008	0.022	9.999	0.013	0.010	0.008
j	98.852247	0.019	5.466838	0.031	4	13.408	1.288	99.999	0.727	0.719	1.451	0.009	0.010	9.999	0.012	0.014	0.014
k	98.852248	0.017	5.449946	0.038	4	13.238	0.584	99.999	0.349	0.352	0.703	0.008	0.017	9.999	0.018	0.011	0.011
l=E	98.868922	0.020	5.600126	0.025	4	13.097	0.359	99.999	0.218	0.264	0.486	0.033	0.025	9.999	0.015	0.008	0.010
m	98.875244	0.526	5.635174	0.065	4	13.360	0.707	99.999	0.368	0.370	0.740	0.015	0.029	9.999	0.047	0.038	0.076
n	98.880700	0.022	5.573934	0.023	4	12.656	1.053	99.999	0.651	0.663	1.319	0.005	0.016	9.999	0.008	0.008	0.012
o=F	98.886319	0.019	5.589101	0.030	4	13.066	0.288	99.999	0.187	0.219	0.409	0.009	0.025	9.999	0.006	0.002	0.008
p	98.896904	0.037	5.613281	0.044	4	13.099	1.276	99.999	0.735	0.716	1.454	0.006	0.012	9.999	0.006	0.011	0.017
q	98.909006	0.010	5.445028	0.020	4	13.478	0.410	99.999	0.230	0.270	0.505	0.013	0.026	9.999	0.024	0.015	0.008

Note: V-I is used to determine I, not R-I.

- Star l is an eclipsing binary.
- Star q may be variable.

**ARCHIVAL REFERENCE DATA: Do not** use the data below for photometry. It is here for archival reference only to tie in old data with new data.

Reference star data from SIMBAD					
Ref Star	ID	RA	Dec	B	V
A	HD46784	06 35 28.79	+05 30 45.3	9.74	8.01
D	GSC 00154-00181	06 35 14.8	+05 36 28		13.2
E=l	GSC 00154-00555	06 35 28.6	+05 36 01		13.0
F=o	GSC 00154-00865	06 35 32.7	+05 35 21		12.7
G=b	GSC 00154-00217	06 35 01.5	+05 33 04		12.3