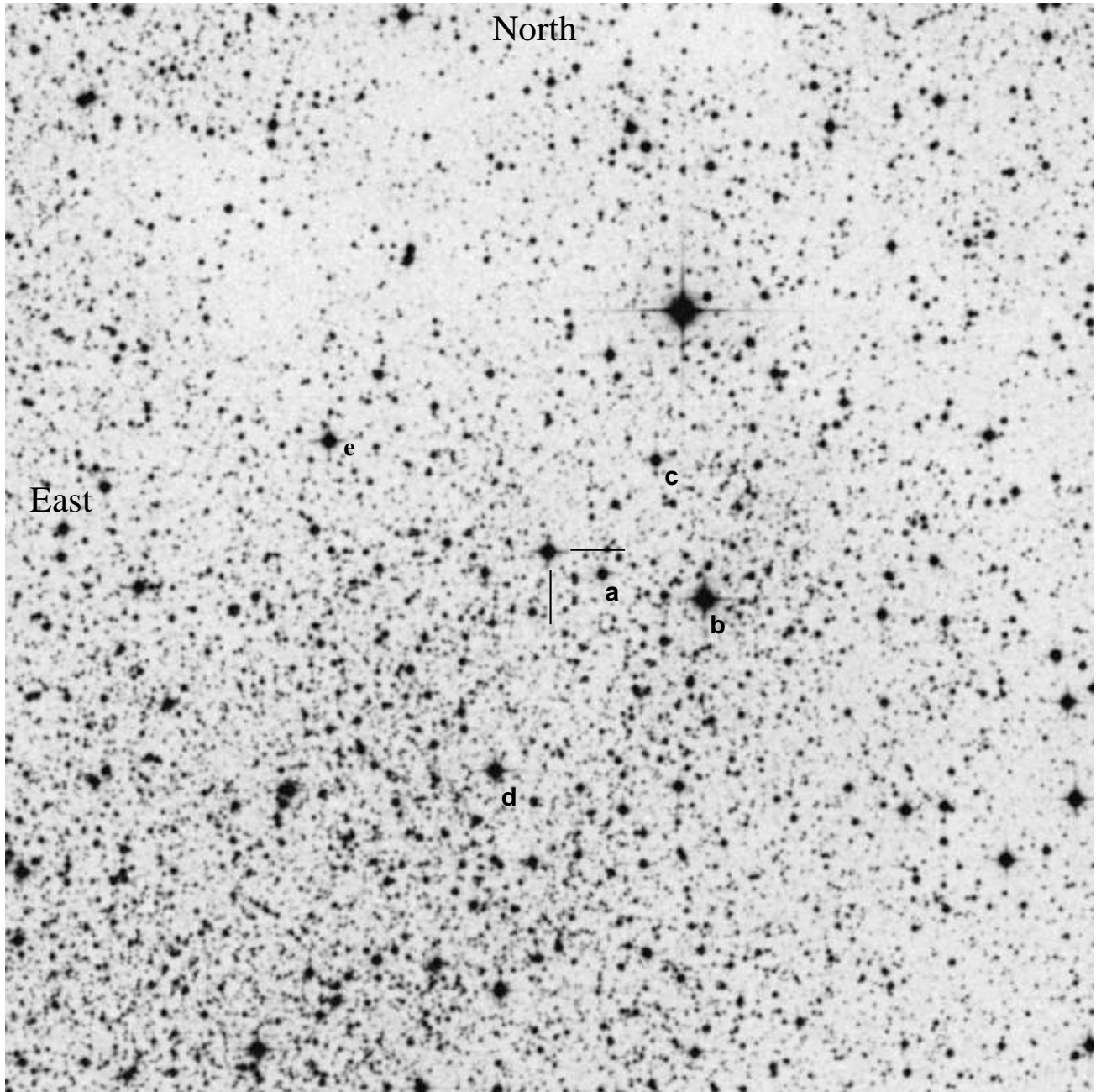


LPH100, AUID 000-BDB-845
(J1826.2-1450, LS 5039, V479 Sct)



J1826.2-1450: $18^{\text{h}}26^{\text{m}}15^{\text{s}}.03 -14^{\circ}50'53''.6$ (J2000) $V=11.23$
 15m ($1/4^{\circ}$) sq field — North up. In Scutum near Sagittarius-Serpens Cauda border,
 Uranometria 294.

Position from: SIMBAD; γ -ray-emitting persistent microquasar, O7V((f))

Reference star data from Martí et al. A&A 418, 271 (2004)

Ref Star	Martí et al. dsgn	B	V	R	I	Revision:
a	C3	13.92	12.86	12.12	11.38	[2009-09-07]
b	C2	11.24	9.94	9.22	8.56	
c	C1	13.26	12.42	11.92	11.46	
d						
e	C4	13.26	11.69	10.79	9.99	

Please use c as the comparison star.