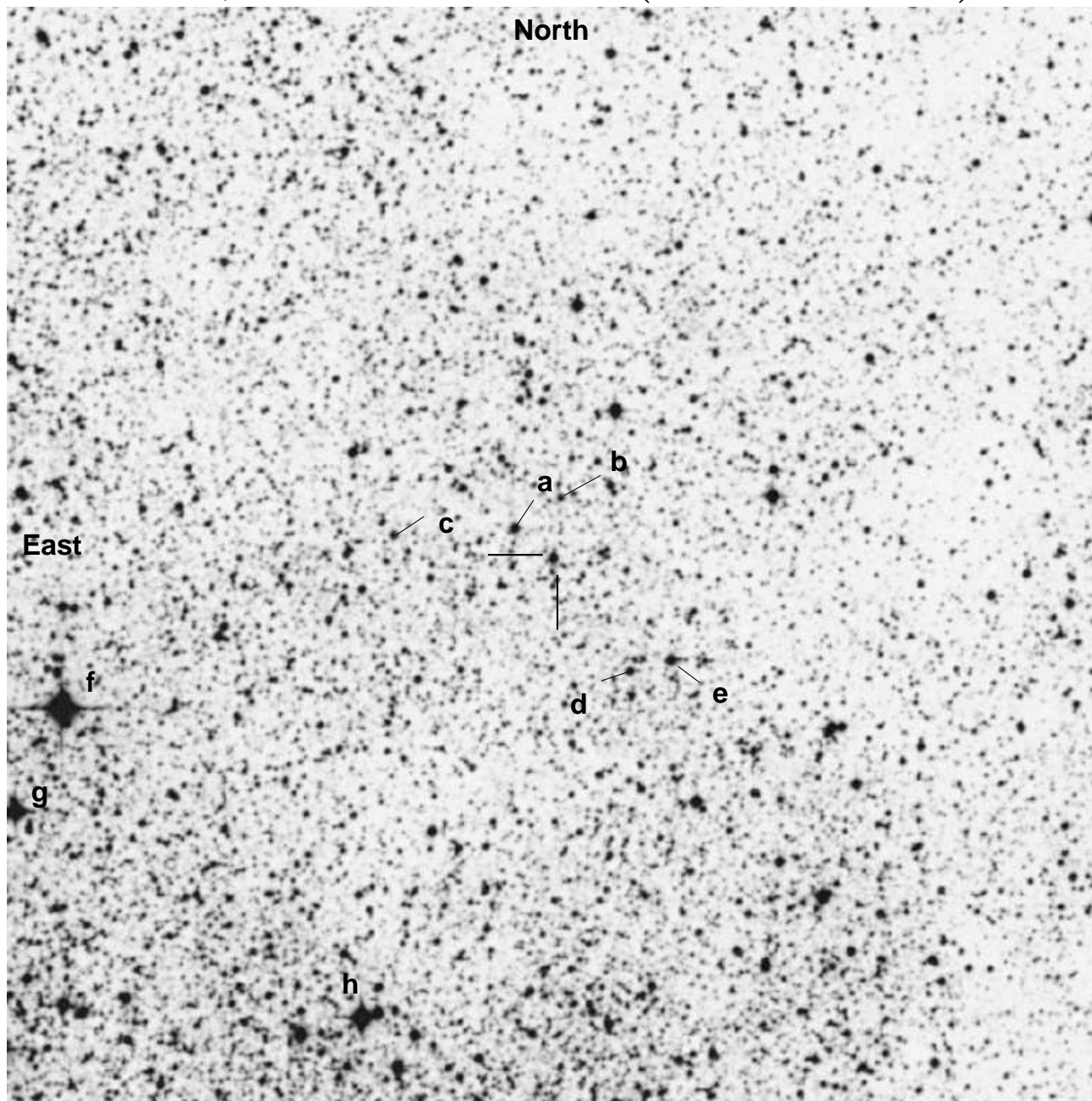


LPH107, AUID 000-BJP-573 (AX 1845.0-0433)



AX 1845.0-0433: $18^h45^m01^s.5$ $-04^\circ33'55''.5$ (J2000) V=13.96
 15m ($1/4^\circ$) sq field In northern Scutum, Uranometria 250.
 Position from: Coe MJ et al. MNRAS 281, 333-338, 1996.
 O9.5I

Comp and Check stars (from SSO data)

| Star | RA | Dec | B | V | R | I | Revision |
|------|------------|-------------|-------|-------|-------|-------|--------------|
| a | 18 45 03.6 | -04 33 32.6 | 16.43 | 13.63 | 12.49 | 12.13 | [2009-09-07] |
| b | 18 45 01.1 | -04 33 08.5 | 15.86 | 14.52 | 13.80 | 13.31 | |
| d | 18 44 57.3 | -04 35 30.9 | 15.07 | 13.87 | 13.21 | 12.69 | |
| e | 18 44 55.0 | -04 35 20.6 | 16.84 | 13.55 | 12.24 | 11.94 | |

Notes: Use "a" as comparison star, do not use ensemble photometry. Record comp magnitude used and chart revision date when submitting data to AAVSO. Positions from Aladin and DSS image.

Results of G. Sarty's photometry with the ANU 24 and 40 inch telescopes:
(SSO_2006_03 + SSO_2007_07)

magnitude \pm standard error of the mean

| Star | B | n | V | n | R | n | I | n |
|------|------------------|---|------------------|---|------------------|---|------------------|---|
| obj | 16.84 \pm 0.06 | 3 | 13.80 \pm 0.07 | 4 | 12.53 \pm 0.05 | 5 | 12.22 \pm 0.08 | 5 |
| a | 16.43 \pm 0.06 | 3 | 13.63 \pm 0.07 | 4 | 12.49 \pm 0.05 | 5 | 12.13 \pm 0.08 | 5 |
| b | 15.86 \pm 0.06 | 3 | 14.52 \pm 0.07 | 4 | 13.80 \pm 0.05 | 5 | 13.31 \pm 0.09 | 5 |
| c | 15.50 \pm 0.06 | 3 | 14.05 \pm 0.07 | 4 | 13.30 \pm 0.05 | 5 | 12.81 \pm 0.09 | 5 |
| d | 15.07 \pm 0.05 | 3 | 13.87 \pm 0.07 | 4 | 13.21 \pm 0.05 | 5 | 12.69 \pm 0.08 | 5 |
| e | 16.84 \pm 0.06 | 3 | 13.55 \pm 0.07 | 4 | 12.24 \pm 0.05 | 5 | 11.94 \pm 0.08 | 5 |

Notes: Star "c" is variable, as seen in G. Sarty's PROMPT_2008 data.

ARCHIVAL REFERENCE DATA: Do not use the data below for photometry.
It is here for archival reference only to tie in old data with new data.

Reference star data from SIMBAD

| Ref Star | ID | RA | Dec | B | V |
|----------|------------------------------|-------------|-------------|-------|------|
| A=f | HD 173438 | 18 45 28.62 | -04 35 58.7 | 8.91 | 8.26 |
| B=g | BD-04 4576 (GSC 05122-00604) | 18 45 31.16 | -04 37 23.4 | 10.8 | 10.2 |
| C=h | HD 173385 (GSC 05122-00150) | 18 45 12.16 | -04 40 12.5 | 10.55 | 9.92 |