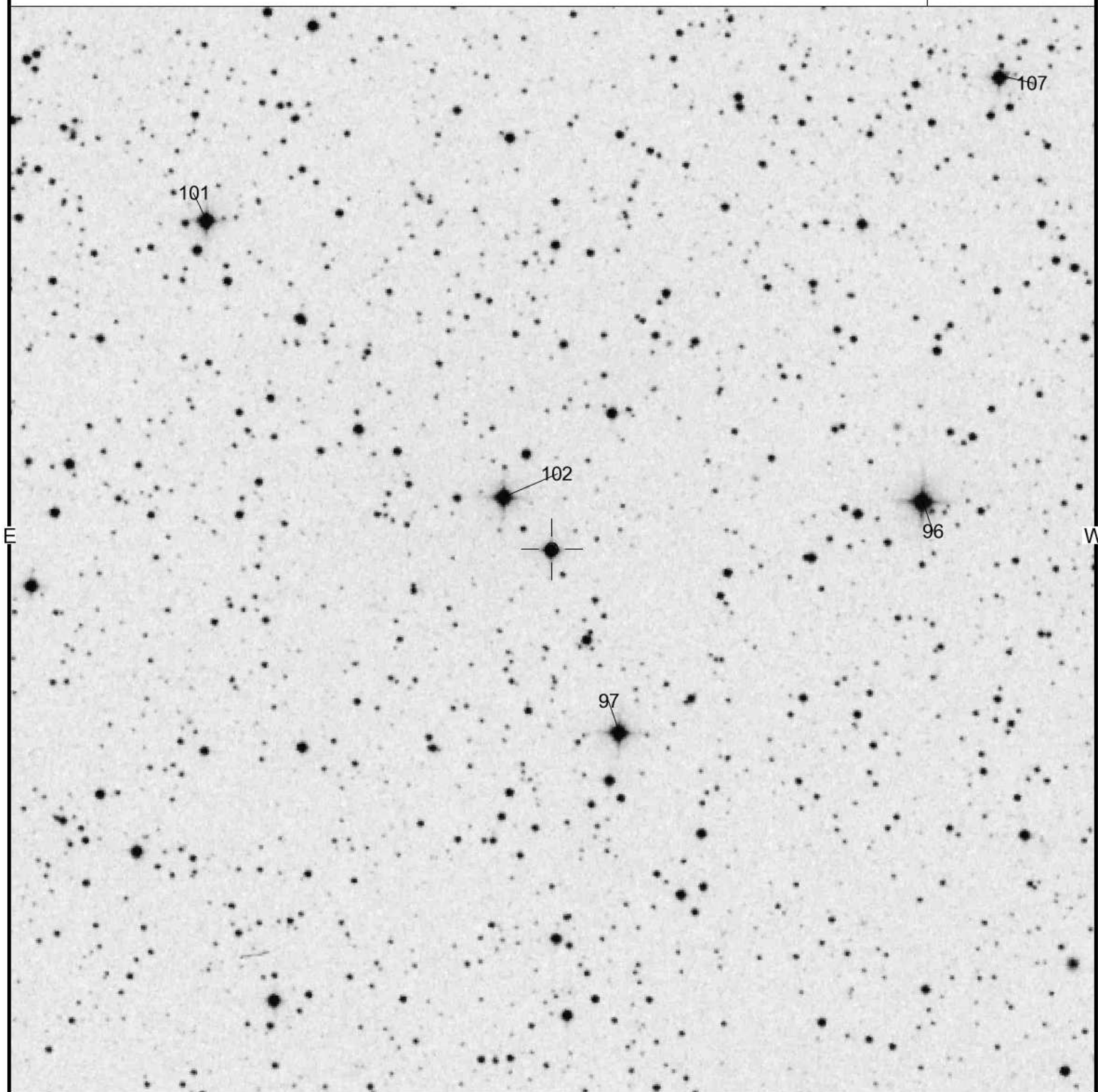


VSX J193252.3+535245

Magn: 10.4 - 10.5 V  
Period:  
Type: BE  
Spec: N

N  
**1H 1936+541**  
(2000) 19:32:52.31 +53:52:45.5

**AAVSO**  
Chart  
5800ah



Please use the photometry table for CCD observations.

### Field Photometry for **1H 1936+541** From the AAVSO Variable Star Database

Data includes all comparison stars within 0.15417° of RA: **19:32:52.31 (293.21796)** & Decl.: **53:52:45.50 (53.87931)**.

| AUID        | RA.                         | Dec.                      | Label      | U | B                               | V                               | Rc                              | Ic                              | J | H | K | Comments                               |
|-------------|-----------------------------|---------------------------|------------|---|---------------------------------|---------------------------------|---------------------------------|---------------------------------|---|---|---|--|
| 000-BKD-898 | 19:32:09.51<br>[293.03961d] | 53:53:35.1<br>[53.89308d] | <b>96</b>  | - | 10.612<br>(0.049) <sup>18</sup> | 9.560<br>(0.025) <sup>18</sup>  | 8.999<br>(0.035) <sup>18</sup>  | 8.615<br>(0.075) <sup>18</sup>  | - | - | - | Sarty star<br>b                        |
| 000-BKD-899 | 19:32:44.54<br>[293.18558d] | 53:49:39.7<br>[53.82769d] | <b>97</b>  | - | 9.698<br>(0.080) <sup>18</sup>  | 9.707<br>(0.058) <sup>18</sup>  | 9.651<br>(0.075) <sup>18</sup>  | 9.630<br>(0.081) <sup>18</sup>  | - | - | - | Sarty star<br>c. Diff and<br>ens comp. |
| 000-BKD-901 | 19:33:32.14<br>[293.38391d] | 53:58:19.8<br>[53.97217d] | <b>101</b> | - | 10.494<br>(0.019) <sup>18</sup> | 10.051<br>(0.014) <sup>18</sup> | 9.763<br>(0.015) <sup>18</sup>  | 9.499<br>(0.018) <sup>18</sup>  | - | - | - | Sarty star<br>g. Ens<br>comp           |
| 000-BKD-900 | 19:32:57.76<br>[293.24066d] | 53:53:39.1<br>[53.89420d] | <b>102</b> | - | 11.489<br>(0.019) <sup>18</sup> | 10.245<br>(0.016) <sup>18</sup> | 9.607<br>(0.019) <sup>18</sup>  | 9.102<br>(0.076) <sup>18</sup>  | - | - | - | Sarty star<br>d                        |
| 000-BKD-902 | 19:32:00.52<br>[293.00217d] | 54:00:48.4<br>[54.01344d] | <b>107</b> | - | 11.176<br>(0.022) <sup>18</sup> | 10.738<br>(0.018) <sup>18</sup> | 10.468<br>(0.020) <sup>18</sup> | 10.225<br>(0.023) <sup>18</sup> | - | - | - | Sarty star a                           |

Report this sequence as: **5800an** in the *chart* field of your observation report.

- **AUID** is the AAVSO Unique Identifier for the star. When reporting a problem, please include this AUID.
- Coordinates are in J2000 sexagesimal format, followed by decimal degrees
- [Click here for a search of variable stars in this field](#) via VSX
- **Label** is that star's label when plotted on an AAVSO chart, this is usually (but not always) its V magnitude rounded to the tenths.

#### Source Reference Table

| Footnote | Source                       | Footnote | Source                  | Footnote | Source                    |
|----------|------------------------------|----------|-------------------------|----------|---------------------------|
| 1        | Tycho-2                      | 13       | Draper, Draper Ext.     | 25       | DENIS                     |
| 2        | GSC 1.2                      | 14       | NSV                     | 26       | CMC14                     |
| 3        | GSC 2.2.1                    | 15       | AAVSO Charts from <2006 | 27       | RR Lyr Comp Star Database |
| 4        | USNO A2                      | 16       | TASS                    | 28       | Bright Star Monitor       |
| 5        | USNO B1                      | 17       | ASAS3                   | 29       | APASS                     |
| 6        | GCVS                         | 18       | Sonoma Research Obs.    | 30       | Wright 28cm               |
| 7        | USNO Astrograph              | 19       | Other                   | 31       | Wright 30cm               |
| 8        | 2MASS                        | 20       | GCPD                    | 32       | Mt. John 60cm             |
| 9        | AAVSO Charts from ~2006-2008 | 21       | SDSS                    | 33       | Sonoma 50cm               |
| 10       | Henden USNO 1m               | 22       | BSC                     | 35       | Landolt UBVRI 2007        |
| 11       | CVCAT                        | 23       | B. Skiff's LONEOS       | 36       | Landolt UBVRI 2009        |
| 12       | Hipparcos                    | 24       | WBVR                    |          |                           |