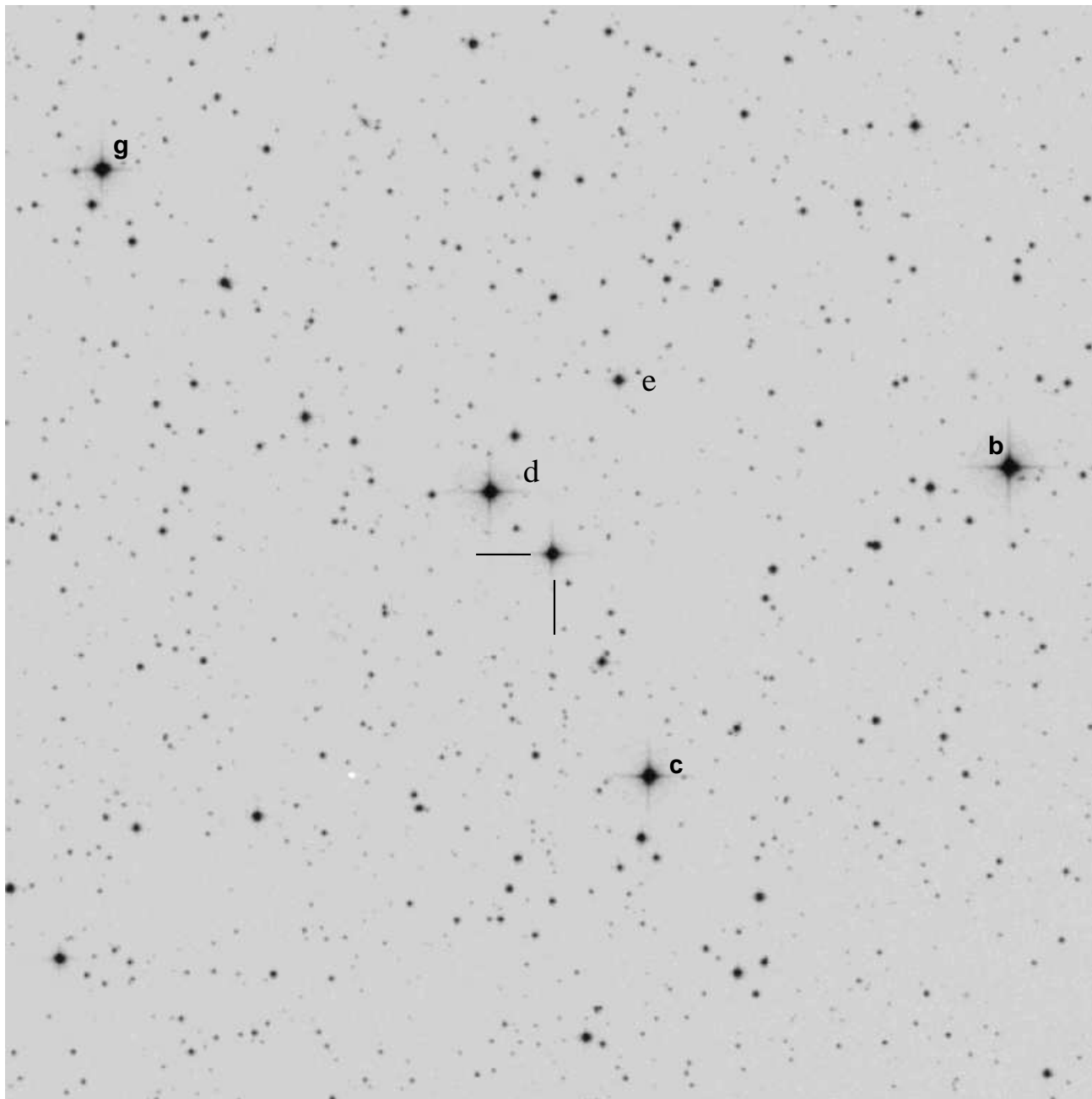


**LPH115, AUID 000-BDC-070 (AAVSO 1930+53,
1H 1936+541, DM+53°2262)**



1936+541: $19^h32^m52^s.31 +53^\circ52'45''.5$ (J2000) $V=9.8$
 15m ($1/4^\circ$) sq field — North up. In Cygnus, Uranometria 55.
 Position from: SIMBAD

Comp and Check stars with relatively neutral B-V (from SRO data)

Star	RA	Dec	B	V	R	I	
c	19 32 44.543	53 49 39.698	9.697	9.684	9.645	9.629	Revision
g	19 33 32.141	53 58 19.801	10.498	10.051	9.764	9.501	[2009-09-07]

Notes on data reduction: For standard differential photometry use c as the comparison star. For ensemble photometry all of the above listed stars may be used. If inhomogeneous ensemble photometry is used, set the zeropoint with the comp star c.

Original Henden sequence data for DM+53.2262 from the 0.35m telescope at Sonoita Research Observatory (SRO) for stars brighter than 11th magnitude:

ID	RA(J2000)	raerr	DEC(J2000)	decerr	nobs	V	B-V	U-B	V-R	R-I	V-I	Errors					
a	293.002160	0.054	54.013473	0.182	4	10.741	0.442	99.999	0.273	0.238	0.508	0.019	0.008	9.999	0.007	0.008	0.012
b=B	293.039647	0.051	53.893106	0.177	4	9.555	1.066	99.999	0.557	0.416	0.965	0.025	0.031	9.999	0.026	0.056	0.063
c=A	293.185596	0.113	53.827694	0.159	4	9.684	0.013	99.999	0.039	0.019	0.055	0.024	0.025	9.999	0.035	0.002	0.031
f	293.193427	0.068	54.047893	0.094	4	10.550	0.919	99.999	0.497	0.442	0.937	0.013	0.004	9.999	0.003	0.007	0.006
h=obj	293.218019	0.125	53.879364	0.143	4	10.448	-0.025	99.999	0.057	0.022	0.074	0.027	0.015	9.999	0.024	0.027	0.051
d	293.240685	0.080	53.894195	0.139	4	10.251	1.248	99.999	0.639	0.532	1.168	0.013	0.007	9.999	0.013	0.046	0.057
g=C	293.383922	0.032	53.972167	0.088	4	10.051	0.447	99.999	0.287	0.264	0.550	0.016	0.010	9.999	0.006	0.012	0.013

Note: V-I is used to determine I, not R-I.

ARCHIVAL REFERENCE DATA: Do not use the data below for photometry. It is here for archival reference only to tie in old data with new data.

Reference star data from SIMBAD

Ref Star	ID	RA	Dec	B	V	
A=c	HD 184658	19 32 44.53	+53 49 39.5	9.70	9.68	
B=b	GSC 03921-01933	19 32 09.51	+53 53 34.9	10.66	9.54	
C=g	GSC 03934-00892	19 33 32.14	+53 58 19.9	10.57	10.14	
From Hipparcos and Tycho Catalogues (ESA 1997)						
Star	RAJ2000	DEJ2000	Vmag	BTmag	VTmag	B-V
Obj	19 32 52.313	+53 52 45.40	10.60	10.375	10.568	-0.170
d	19 32 57.715	+53 53 38.57	10.24	11.987	10.398	1.331
A=c	19 32 44.504	+53 49 39.42	9.68	9.707	9.683	0.019
TASS Mark IV Photometric Survey of Northern Sky (Droege+, 2006)						
Star	RAJ2000	DEJ2000	TASS4ID	Vmag	Imag	V-I
Obj	19 32 52.34	+53 52 46.1	2668236	10.440	10.359	0.081
d	19 32 57.72	+53 53 39.0	2668242	10.343	9.032	1.311
A=c	19 32 44.52	+53 49 39.4	2668229	9.680	9.608	0.072