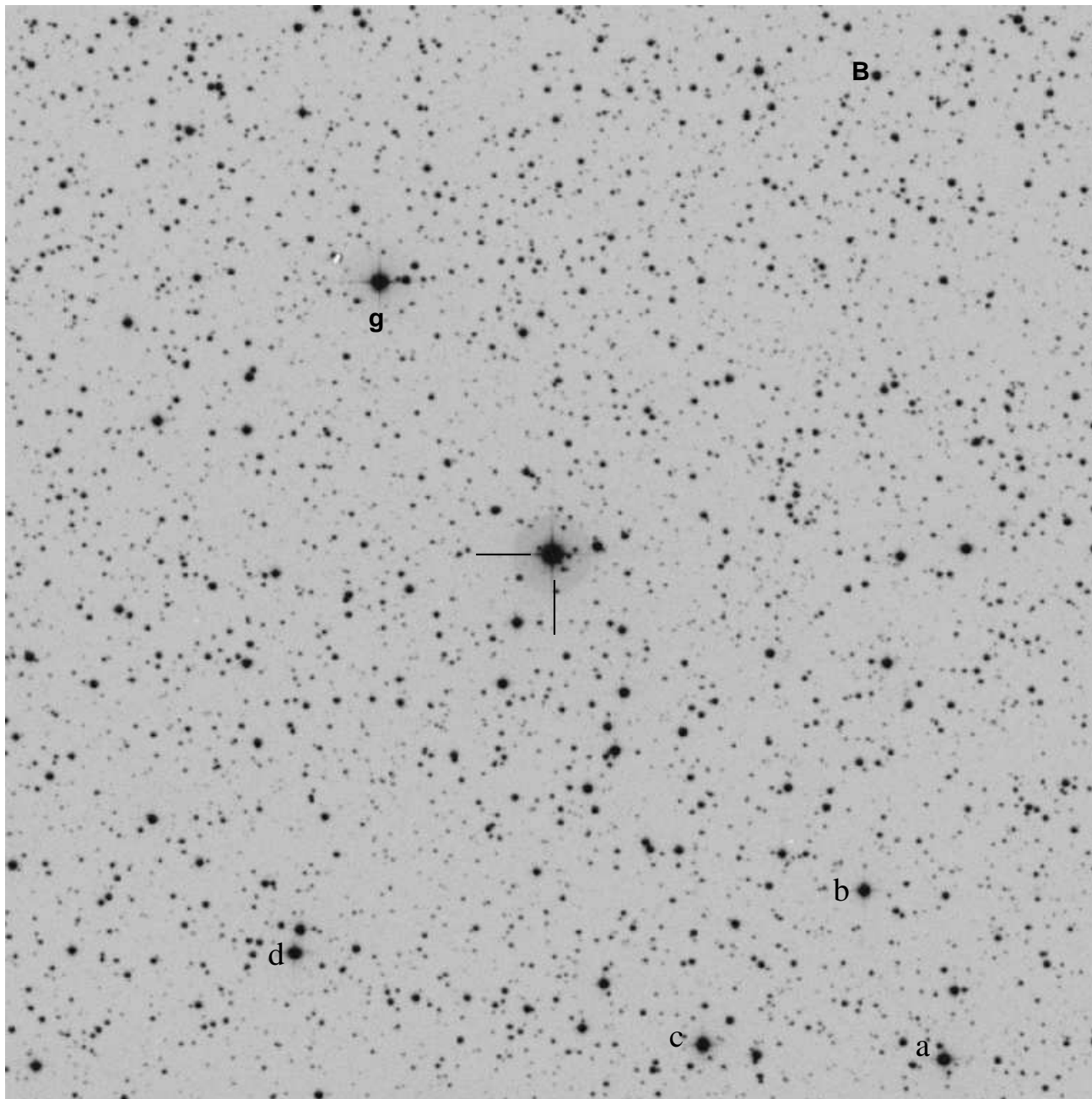


LPH127, AUID 000-BFS-469 (1H 2202+501,
SAO 51568, V2175 Cyg, AAVSO 2157+49)



2202+501: $22^h01^m38^s.20 +50^\circ10'04''.6$ (J2000) $V=8.8$
 15m ($1/4^\circ$) sq field — North up. Near Cyg, Lac border, Uranometria 57.
 Position from: SIMBAD

Comp and Check stars with relatively neutral B-V (from SRO data)

Star	RA	Dec	B	V	R	I
g	22 01 52.948	50 13 47.852	10.497	10.350	10.266	10.169

Notes on data reduction: For standard differential photometry use g as the comparison star. If inhomogeneous ensemble photometry is used, set the zeropoint with the comp star g.

Original Henden sequence data for 1H2202+501 from the 0.35m telescope at Sonoita Research Observatory (SRO) for stars brighter than 11th magnitude:

ID	RA(J2000)	raerr	DEC(J2000)	decerr	nobs	V	B-V	U-B	V-R	R-I	V-I	Errors					
obj	330.409173	0.033	50.168025	0.028	5	9.361	0.221	99.999	0.195	0.177	0.369	0.018	0.036	9.999	0.021	0.008	0.017
f	330.449018	0.027	50.026300	0.028	5	10.138	0.231	99.999	0.119	0.174	0.296	0.016	0.033	9.999	0.025	0.010	0.017
g=A	330.470615	0.027	50.229959	0.035	5	10.350	0.147	99.999	0.084	0.099	0.181	0.014	0.022	9.999	0.017	0.007	0.017
d	330.500733	0.033	50.077291	0.042	5	10.883	1.277	99.999	0.676	0.641	1.319	0.014	0.023	9.999	0.026	0.014	0.022
e	330.586174	0.032	50.023810	0.082	5	10.658	0.404	99.999	0.251	0.276	0.530	0.010	0.025	9.999	0.021	0.017	0.010

Note: V-I is used to determine I, not R-I.

ARCHIVAL REFERENCE DATA: Do not use the data below for photometry. It is here for archival reference only to tie in old data with new data.

Reference star data from SIMBAD						
Ref Star	ID	RA	Dec	B	V	
A=g	ALS 12095	22 01 52.95	+50 13 47.5	10.46	10.48	
B (Var)	MV Cyg	22 01 10.1	+50 16 32	14.20		