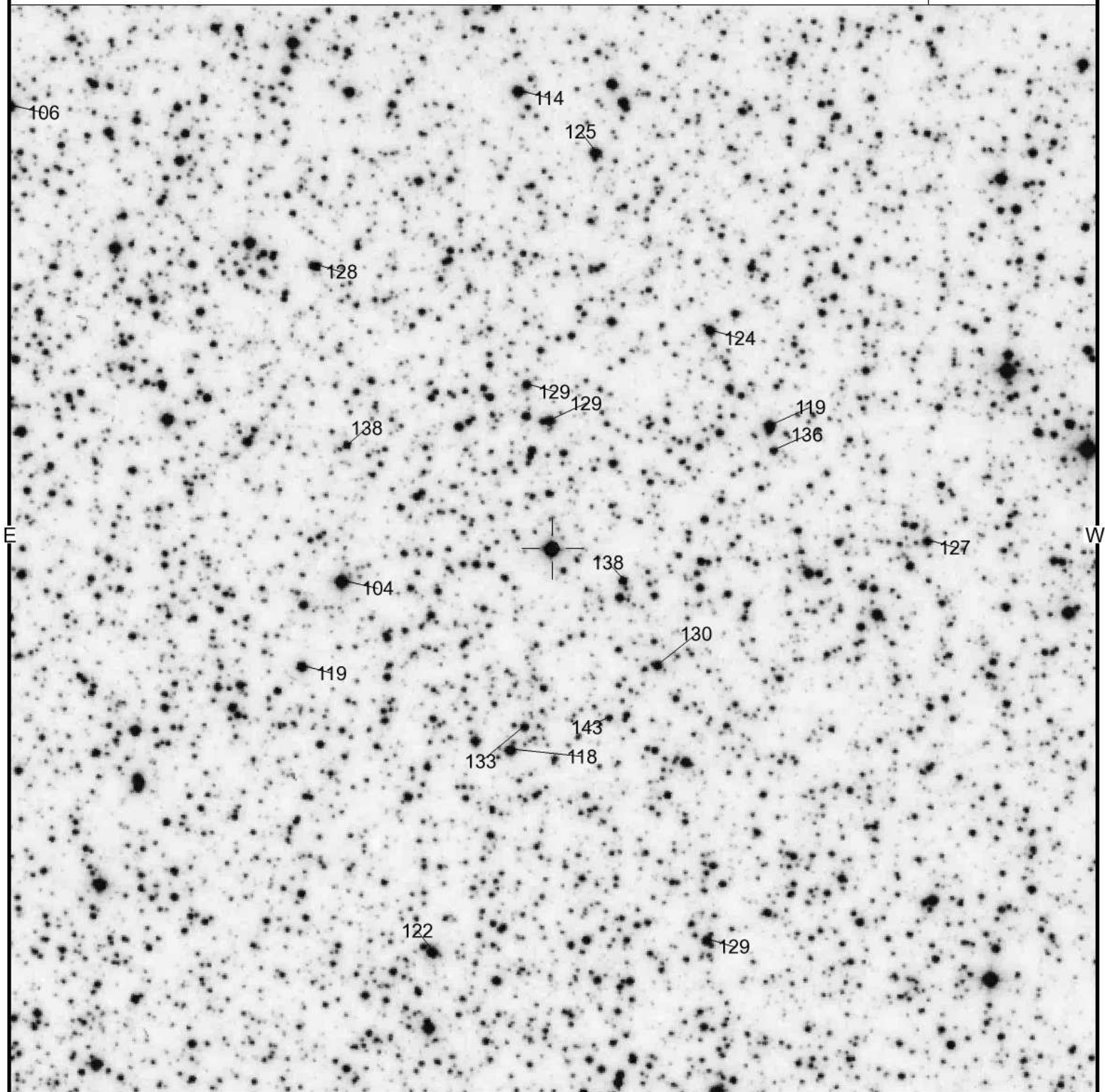


4U 2206+54

Magn: 9.7 - 9.9 V  
Period: 19.12  
Type: HMXB  
Spec: O9.5Ve

4U 2206+543  
(2000) 22:07:56.24 +54:31:6.4

AAVSO  
Chart  
5800h



FOV = 18.5'

Please use the photometry table for CCD observations.

**Field Photometry for 4U 2206+543 From the AAVSO Variable Star Database**

Data includes all comparison stars within 0.15417° of RA: 22:07:56.24 (331.98433) & Decl.: 54:31:06.40 (54.51844).

AUID	RA.	Dec.	Label	U	B	V	Rc	Ic	J	H	K	Comments
000-BKD-589	22:08:20.76 [332.08649d]	54:30:33.5 [54.50930d]	<b>104</b>	-	10.656 (0.021) <sup>18</sup>	10.437 (0.012) <sup>18</sup>	10.316 (0.018) <sup>18</sup>	10.155 (0.020) <sup>18</sup>	-	-	-	Sarty star k
000-BJT-038	22:08:59.94 [332.24976d]	54:38:37.4 [54.64372d]	<b>106</b>	-	10.831 (0.017) <sup>18</sup>	10.645 (0.006) <sup>18</sup>	10.528 (0.008) <sup>18</sup>	10.368 (0.013) <sup>18</sup>	-	-	-	
000-BJT-039	22:08:00.19 [332.00079d]	54:38:53.2 [54.64811d]	<b>114</b>	-	11.669 (0.019) <sup>18</sup>	11.389 (0.011) <sup>18</sup>	11.258 (0.018) <sup>18</sup>	11.062 (0.022) <sup>18</sup>	-	-	-	
000-BKD-587	22:08:01.04 [332.00433d]	54:27:41.9 [54.46164d]	<b>118</b>	-	12.376 (0.018) <sup>18</sup>	11.837 (0.008) <sup>18</sup>	11.521 (0.012) <sup>18</sup>	11.183 (0.013) <sup>18</sup>	-	-	-	Sarty star i. Check
000-BJT-040	22:08:25.41 [332.10587d]	54:29:06.6 [54.48517d]	<b>119</b>	-	12.172 (0.021) <sup>18</sup>	11.946 (0.013) <sup>18</sup>	11.816 (0.026) <sup>18</sup>	11.640 (0.016) <sup>18</sup>	-	-	-	Sarty "m" Star. Comp
000-BKD-585	22:07:30.70 [331.87793d]	54:33:11.8 [54.55328d]	<b>119</b>	-	13.063 (0.123) <sup>18</sup>	11.865 (0.009) <sup>18</sup>	11.179 (0.015) <sup>18</sup>	10.524 (0.019) <sup>18</sup>	-	-	-	Sarty star f
000-BKD-588	22:08:10.16 [332.04233d]	54:24:16.1 [54.40447d]	<b>122</b>	-	13.485 (0.011) <sup>18</sup>	12.151 (0.009) <sup>18</sup>	11.435 (0.015) <sup>18</sup>	10.757 (0.018) <sup>18</sup>	-	-	-	Sarty star j
000-BJT-041	22:07:37.50 [331.90625d]	54:34:48.6 [54.58017d]	<b>124</b>	-	13.332 (0.021) <sup>18</sup>	12.418 (0.010) <sup>18</sup>	11.894 (0.021) <sup>18</sup>	11.439 (0.022) <sup>18</sup>	-	-	-	
000-BKD-584	22:07:51.10 [331.96292d]	54:37:51.2 [54.63089d]	<b>125</b>	-	13.957 (0.019) <sup>18</sup>	12.528 (0.010) <sup>18</sup>	11.726 (0.012) <sup>18</sup>	10.942 (0.017) <sup>18</sup>	-	-	-	Sarty star e
000-BJT-042	22:07:12.22 [331.80090d]	54:31:14.3 [54.52064d]	<b>127</b>	-	12.937 (0.061) <sup>18</sup>	12.685 (0.025) <sup>18</sup>	12.502 (0.035) <sup>18</sup>	12.269 (0.037) <sup>18</sup>	-	-	-	
000-BKD-590	22:08:24.10 [332.10040d]	54:35:55.9 [54.59886d]	<b>128</b>	-	13.395 (0.026) <sup>18</sup>	12.808 (0.013) <sup>18</sup>	12.451 (0.021) <sup>18</sup>	12.069 (0.023) <sup>18</sup>	-	-	-	Sarty star l
000-BKD-586	22:07:56.48 [331.98532d]	54:33:17.9 [54.55497d]	<b>129</b>	-	14.397 (0.024) <sup>18</sup>	12.919 (0.008) <sup>18</sup>	12.109 (0.018) <sup>18</sup>	11.329 (0.028) <sup>18</sup>	-	-	-	Sarty star g
000-BKD-582	22:07:38.14 [331.90891d]	54:24:28.2 [54.40783d]	<b>129</b>	-	14.147 (0.025) <sup>18</sup>	12.857 (0.014) <sup>18</sup>	12.175 (0.023) <sup>18</sup>	11.523 (0.025) <sup>18</sup>	-	-	-	Sarty star c
000-BJT-043	22:07:59.10 [331.99625d]	54:33:54 [54.56500d]	<b>129</b>	-	13.359 (0.022) <sup>18</sup>	12.924 (0.013) <sup>18</sup>	12.662 (0.021) <sup>18</sup>	12.390 (0.015) <sup>18</sup>	-	-	-	
000-BKD-583	22:07:43.86 [331.93274d]	54:29:08.3 [54.48564d]	<b>130</b>	-	14.300 (0.042) <sup>18</sup>	12.998 (0.022) <sup>18</sup>	12.260 (0.033) <sup>18</sup>	11.524 (0.036) <sup>18</sup>	-	-	-	Sarty star d
000-BJT-044	22:07:59.43 [331.99762d]	54:28:06.1 [54.46836d]	<b>133</b>	-	13.875 (0.024) <sup>18</sup>	13.253 (0.013) <sup>18</sup>	12.899 (0.017) <sup>18</sup>	12.528 (0.021) <sup>18</sup>	-	-	-	
000-BJT-045	22:07:30.19 [331.87579d]	54:32:47.1 [54.54642d]	<b>136</b>	-	14.021 (0.051) <sup>18</sup>	13.646 (0.029) <sup>18</sup>	13.429 (0.067) <sup>18</sup>	13.128 (0.069) <sup>18</sup>	-	-	-	
000-BKD-591	22:07:47.89 [331.94955d]	54:30:35.1 [54.50975d]	<b>138</b>	-	15.720 (0.117) <sup>18</sup>	13.793 (0.015) <sup>18</sup>	12.677 (0.034) <sup>18</sup>	11.496 (0.043) <sup>18</sup>	-	-	-	Sarty star o
000-BJT-046	22:08:20.21 [332.08420d]	54:32:52.7 [54.54797d]	<b>138</b>	-	14.389 (0.037) <sup>18</sup>	13.789 (0.010) <sup>18</sup>	13.387 (0.031) <sup>18</sup>	12.939 (0.040) <sup>18</sup>	-	-	-	
000-BJT-047	22:07:49.49 [331.95621d]	54:28:14.9 [54.47081d]	<b>143</b>	-	14.751 (0.042) <sup>18</sup>	14.276 (0.037) <sup>18</sup>	13.985 (0.071) <sup>18</sup>	13.613 (0.080) <sup>18</sup>	-	-	-	

Report this sequence as : **5800I** in the *chart* field of your observation report.

- **AUID** is the AAVSO Unique Identifier for the star. When reporting a problem, please include this AUID.
- Coordinates are in J2000 sexagesimal format, followed by decimal degrees
- [Click here for a search of variable stars in this field](#) via VSX
- **Label** is that star's label when plotted on an AAVSO chart, this is usually (but not always) its V magnitude rounded to the tenths.

**Source Reference Table**

Footnote	Source	Footnote	Source	Footnote	Source
1	Tycho-2	13	Draper, Draper Ext.	25	DENIS
2	GSC 1.2	14	NSV	26	CMC14
3	GSC 2.2.1	15	AAVSO Charts from <2006	27	RR Lyr Comp Star Database
4	USNO A2	16	TASS	28	Bright Star Monitor
5	USNO B1	17	ASAS3	29	APASS
6	GCVS	18	Sonoita Research Obs.	30	Wright 28cm
7	USNO Astrograph	19	Other	31	Wright 30cm
8	2MASS	20	GCPD	32	Mt. John 60cm
9	AAVSO Charts from ~2006-2008	21	SDSS	33	Sonoita 50cm
10	Henden USNO 1m	22	BSC	35	Landolt UBVR I 2007
11	CVCAT	23	B. Skiff's LONEOS	36	Landolt UBVR I 2009
12	Hipparcos	24	WBVR		