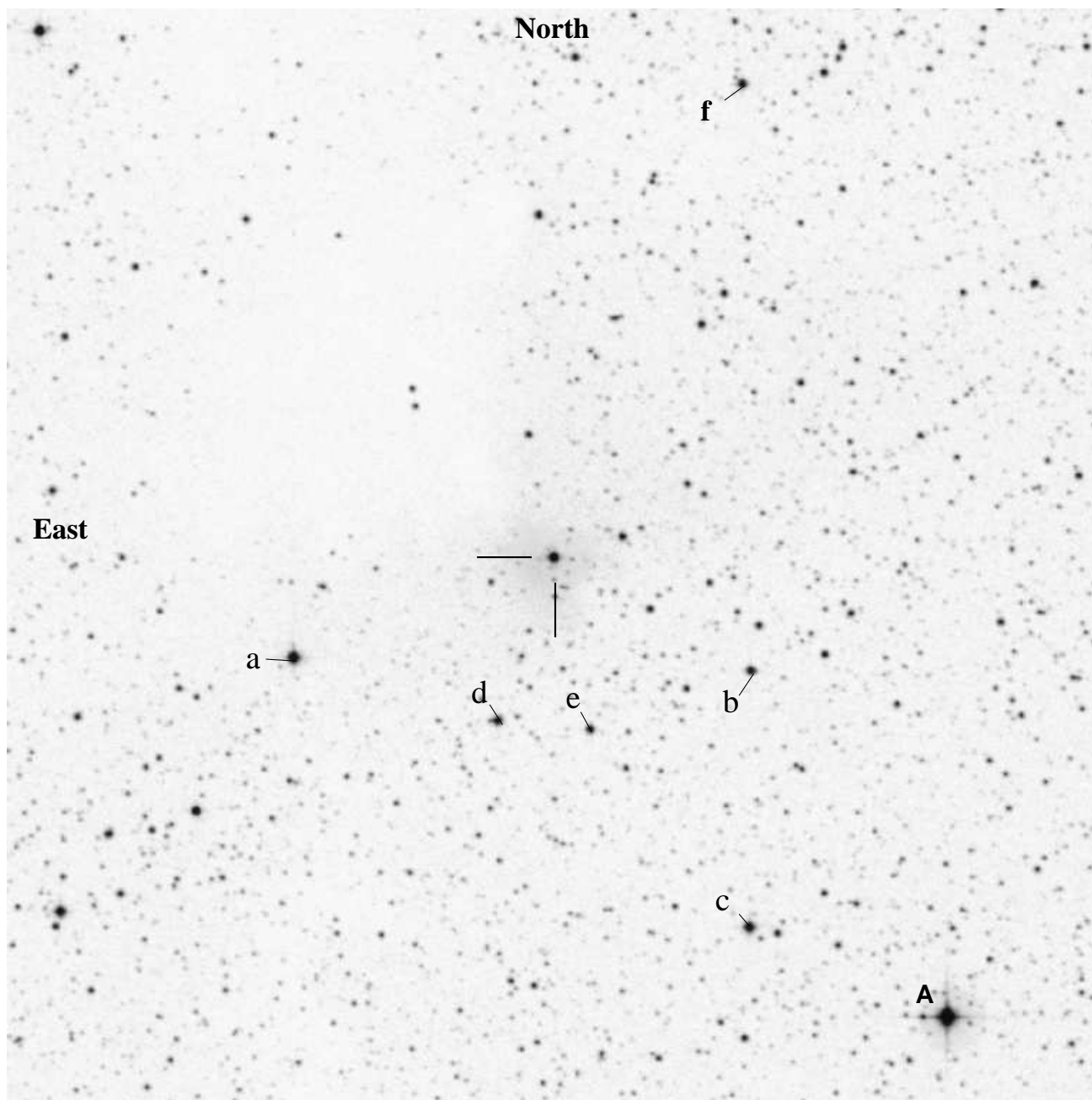


LPH129, AUID 000-BDC-567 (AAVSO 2223+60,
2214+589, GG3 71, IRAS 22248+6058, V669 Cep)



2214+589: $22^h26^m38^s.7 + 61^\circ13'32''$ (J2000) V=11, 15m ($1/4^\circ$) sq field — North up.
In Cepheus, Uranometria 34. Position from: SIMBAD

Comp and Check stars (from SRO data)

Star	RA	Dec	B	V	R	I	
c	22 26 14.194	61 08 37.943	12.424	11.859	11.512	11.150	Revision
d	22 26 44.12	61 11 15.713	13.706	12.899	12.398	11.869	[2009-09-07]
e	22 26 33.529	61 11 12.948	14.642	13.542	12.901	12.232	
f	22 26 20.357	61 20 8.135	13.926	13.067	12.521	11.902	

Notes on data reduction: For standard differential photometry use c as the comparison star. For ensemble photometry use all of the above listed stars with extreme caution as they are all very red and therefore have a high probability of being variable. If inhomogeneous ensemble photometry is used, set the zeropoint with the comp star c.

Original Henden sequence data for V669CEP from the 0.35m telescope at Sonoita Research Observatory (SRO) for stars fainter than 10th and brighter than 13th magnitude and in the field $336.536 < \text{RA} < 336.786$, $61.006 < \text{Dec} < 61.351$:

ID	RA(J2000)	raerr	DEC(J2000)	decerr	nobs	V	B-V	U-B	V-R	R-I	V-I	Errors					
c	336.559	0.071	61.144	0.029	4	11.859	0.565	99.999	0.347	0.360	0.709	0.009	0.018	9.999	0.011	0.022	0.032
b	336.565	0.058	61.202	0.075	4	13.892	2.179	99.999	1.278	1.240	2.530	0.008	0.021	9.999	0.017	0.018	0.033
f	336.585	0.070	61.336	0.026	4	13.067	0.859	99.999	0.546	0.608	1.165	0.006	0.008	9.999	0.006	0.005	0.008
e	336.640	0.043	61.187	0.024	4	13.542	1.100	99.999	0.641	0.662	1.310	0.008	0.005	9.999	0.009	0.008	0.008
obj	336.661	0.045	61.225	0.014	4	12.359	0.848	99.999	0.663	0.614	1.278	0.012	0.014	9.999	0.012	0.035	0.046
d	336.684	0.037	61.188	0.019	4	12.899	0.807	99.999	0.501	0.523	1.030	0.006	0.010	9.999	0.008	0.005	0.009

Note: V-I is used to determine I, not R-I.

ARCHIVAL REFERENCE DATA: Do not use the data below for photometry. It is here for archival reference only to tie in old data with new data.

Reference star data from SIMBAD						
Ref Star	ID	RA		Dec		B V
A	BD+60 2394	22 25	51.22	+61 07	33.3	10.62 9.47